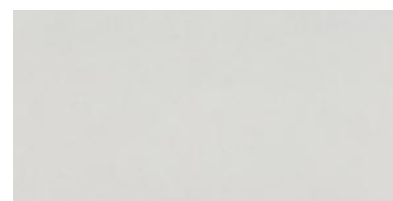


TECHNICAL FEATURES

MODEL: NUVA BLANCO
SIZE: 30X60(F)
THICKNESS(mm): 7
DATE: 16/08/2023
CODE: 031.547.0012.07579
GROUP: GROUP BIII UNE-EN 14411 Annex L / SASO ISO 13006:2018 Annex L
TILE TYPE: GL
FINISH: RECTIFIED GLOSS
FAMILY: WHITE BODY WALL TILES
NUMBER OF DESIGNS:



TEST	RESULT	
UNE-EN ISO 10545-2 DIMENSIONAL FEATURES	COMPLIES WITH THE STANDARD	
UNE-EN ISO 10545-3 WATER ABSORPTION	16%	
UNE-EN ISO 10545-4 MODULUS OF RUPTURE - BREAKING STRENGTH	600-900 N	
	MODULUS OF RUPTURE - BENDING STRENGTH	15-25 N/mm2
UNE-EN ISO 10545-8 LINEAR THERMAL EXPANSION	<7,0 x 10⁻⁶ °C⁻¹	
UNE-EN ISO 10545-9 THERMAL SHOCK RESISTANCE	RESISTS	
UNE-EN ISO 10545-11 CRAZING RESISTANCE	RESISTS	
UNE-EN ISO 10545-13	CHEMICAL RESISTANCE - AMMONIUM CHLORIDE 100 G/L	A
	CHEMICAL RESISTANCE - SODIUM HYPOCHLORITE 20 MG/L	A
	CHEMICAL RESISTANCE - HYDROCHLORIC ACID 3%	COMPLIES WITH THE STANDARD
	CHEMICAL RESISTANCE - CITRIC ACID 100 G/L	COMPLIES WITH THE STANDARD
	CHEMICAL RESISTANCE - POTASSIUM HYDROXYDE 30 G/L	COMPLIES WITH THE STANDARD
UNE-EN ISO 10545-14	STAIN RESISTANCE - GREEN AGENT IN LIGHT OIL	5
	STAIN RESISTANCE - IODINE SOLUTION IN ALCOHOL	5
	STAIN RESISTANCE - OLIVE OIL	5

Declaration of Performance:

https://www.pamesa.com/ERP/4.0/empresas/151/045/ficheros/t00030006/111/DdP_DoP_N001CPR2013.pdf

TECHNICAL DEPARTMENT
PAMESA CERÁMICA