



BIM

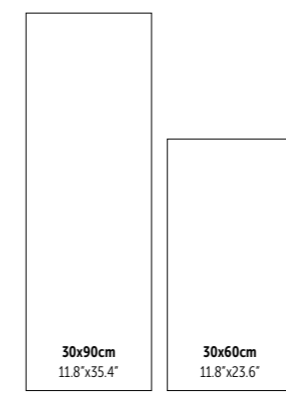
Citizen Grey 29.5x88.8 cm ret. K9008R
Mosaic Citizen Grey 29.5x29.5 cm KM9008

CITIZEN

Urban spirit for modern and cosmopolitan spaces.

Espírito urbano para espaços modernos e cosmopolitas.
Esprit urbain pour des espaces modernes et cosmopolites.
Urbaner Geist für moderne und weltoffene Räume.
Espíritu urbano para espacios modernos y cosmopolitas.

FULL BODY **Extruded Porcelain Tiles**
Wall



Skintech
4,5 mm

Only 4,5 mm thickness. Ideal for renovations without demolitions.
Apenas 4,5mm de espessura. Ideal para renovações sem demolições.
Seulement 4,5 mm épaisseur. Idéal pour des rénovations sans démolition.
Nur 4,5 mm Stärke. Ideal für Renovierungen ohne Abriss.
Solo 4,5 mm de grosor. Ideal para renovaciones.

3 Colours



ARCHITECTURE



Citizen Grey 29.5x88.8 cm ret. K9008R
Mosaic Citizen Grey 29.5x29.5 cm KM9008
Mosaic Citizen Carbon 29.5x29.5 cm KM9009



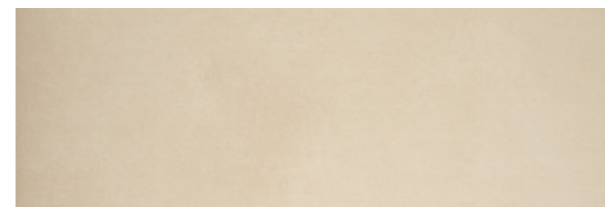
Skintech ▼
4,5 mm ▲

ARCHITECTURE

Citizen Carbon 29.5x88.8 cm ret. K9009R

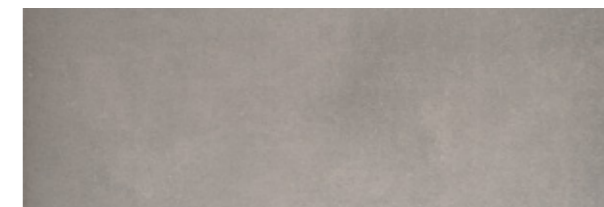


Citizen Ivory 29.5x88.8 cm ret. K9007R



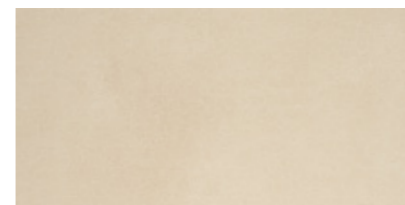
IVORY
29.5x88.8 cm ret.

◆
K9007R | GF11



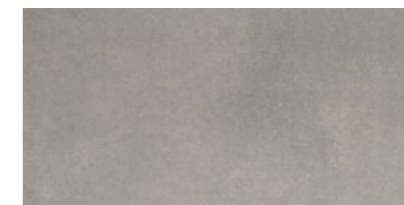
GREY
29.5x88.8 cm ret.

◆
K9008R | GF11



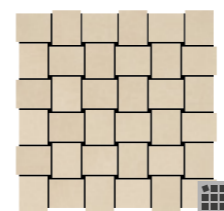
IVORY
29.5x59.2 cm ret.

◆
K5007R | GF08

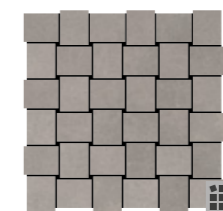


GREY
29.5x59.2 cm ret.

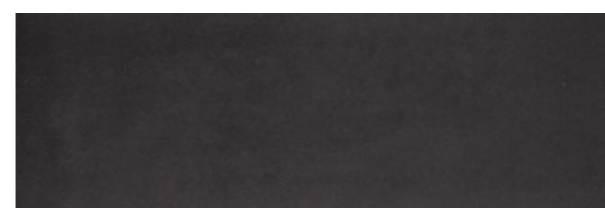
◆
K5008R | GF08



MOSAIC CITIZEN IVORY
(4.5X5 cm) (PIECE)
29.5x29.5x0.45 cm KM9007 | GJ34

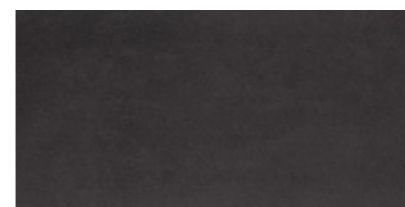


MOSAIC CITIZEN GREY
(4.5X5 cm) (PIECE)
29.5x29.5x0.45 cm KM9008 | GJ34



CARBON
29.5x88.8 cm ret.

◆
K9009R | GF11



CARBON
29.5x59.2 cm ret.

◆
K5009R | GF08



MOSAIC CITIZEN CARBON
(4.5X5 cm) (PIECE)
29.5x29.5x0.45 cm KM9009 | GJ34

PACKAGING

Sizes (cm) Dimensão . Format Maße . Formato	Pieces Peças . Pièces Stück . Piezas	SQM M ²	Weight Peso . Poids Gewicht . Peso	Box Caixa . Boîte Karton . Caja	SQM M ²	Weight Peso . Poids Gewicht . Peso
29.5x88.8x0.45 ret.	8	2.090	21.80	25	52.250	560
29.5x59.2x0.45 ret.	14	2.440	22.63	40	97.600	960